



Product Service

# CERTIFICATE

No. B 16 04 13332 232

**Holder of Certificate:** IDEC CORPORATION  
 2-6-64 Nishimiyahara, Yodogawa-Ku  
 Osaka  
 532-0004 JAPAN

**Production Facility(ies):** 16464

**Certification Mark:**



**Product:** Power switch  
**Model(s):** Series HS1C and HS1C-K  
 Safety door lock switch  
 An enclosure listing the detailed nomenclature belongs to this certificate.

**Parameters:**

Rated voltage	:	250 V (Ue)
Rated current	:	3 A (Ie)
Utilization category	:	AC-15 and DC-13
Protection class	:	IP 67
Electrical durability	:	100,000 operations

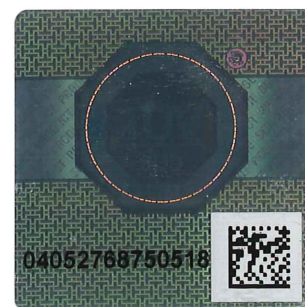
**Tested according to:** EN 60947-5-1:2003/A1:2009  
 GS-ET-19:2011

The product was tested on a voluntary basis and complies with the essential requirements. The certification mark shown above can be affixed on the product. It is not permitted to alter the certification mark in any way. In addition the certification holder must not transfer the certificate to third parties. See also notes overleaf.

**Test report no.:** 713076715  
**Valid until:** 2021-04-03

**Date,** 2016-04-06 (Matthias Rattensperger)

Page 1 of 3





# Enclosure to Certificate No. B 16 04 13332 232

## HS 1C Series Full Type Designation

$\frac{HS}{1}$   $\frac{1}{2}$   $\frac{C}{3}$  -  $\frac{R}{4}$   $\frac{2}{5}$   $\frac{4}{6}$   $\frac{4}{7}$   $\frac{R}{8}$  -  $\frac{R}{9}$  -  $\frac{\square}{10}$

1. Basic Type HS Series
2. Enclosure material  
1 : Aluminium die-cast enclosure
3. With/without solenoid  
C : With solenoid
4. Solenoid location (may be followed)  
R : Right side  
L : Left side
5. Contact configuration  
Main circuit / Auxiliary circuit  
Blank: 1NC + 1NC / 1 NO + 1 NO  
1 : 1NC + 1NC / 1 NO  
2 : 1NC + 1NC / 1 NC + 1 NC  
3 : 1NC + 1NC / 1 NC
6. Operational voltage of solenoid  
4 : 24 V DC
7. Rated voltage of pilot light  
0 : Without pilot light  
4 : 24 V DC
8. Enclosure color (may be followed)  
R : Red  
Z : Beige
9. Lens color of pilot light (may be followed)  
Blank : Without pilot light  
R : Red  
G : Green
10. Additional letters and/or numbers (may be followed)  
 $\square$  : Manufacturer Control No.



# Enclosure to Certificate No. B 16 04 13332 232

## HS1C-K Series Full Type Designation

$\frac{HS}{1}$   $\frac{1}{2}$   $\frac{C}{3}$  -  $\frac{K}{4}$   $\frac{2}{5}$   $\frac{4}{6}$   $\frac{4}{7}$   $\frac{R}{8}$  -  $\frac{R}{9}$  -  $\frac{O}{10}$  -  $\frac{\square}{11}$

1. Basic Type HS Series
2. Enclosure material  
1 : Aluminium die-cast enclosure
3. With/without solenoid  
C : With solenoid
4. Key Operator (may be followed)  
K : With Key Interlock
5. Contact configuration  
Main circuit / Auxiliary circuit  
Blank: 1NC + 1NC / 1 NO + 1 NO  
1 : 1NC + 1NC / 1 NO  
2 : 1NC + 1NC / 1 NC + 1 NC  
3 : 1NC + 1NC / 1 NC
6. Operational voltage of solenoid  
4 : 24 V DC
7. Rated voltage of pilot light  
0 : Without pilot light  
4 : 24 V DC
8. Enclosure color (may be followed)  
R : Red  
Z : Beige
9. Lens color of pilot light (may be followed)  
Blank : Without pilot light  
R : Red  
G : Green
10. Additional letters and/or numbers (may be followed)  
O : Interlock Key No.
11. Additional letters and/or numbers (may be followed)  
□ : Manufacturer Control No.